

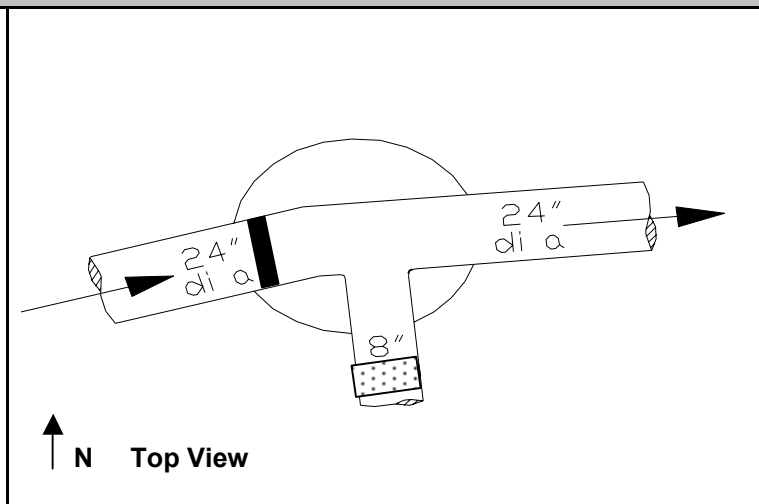
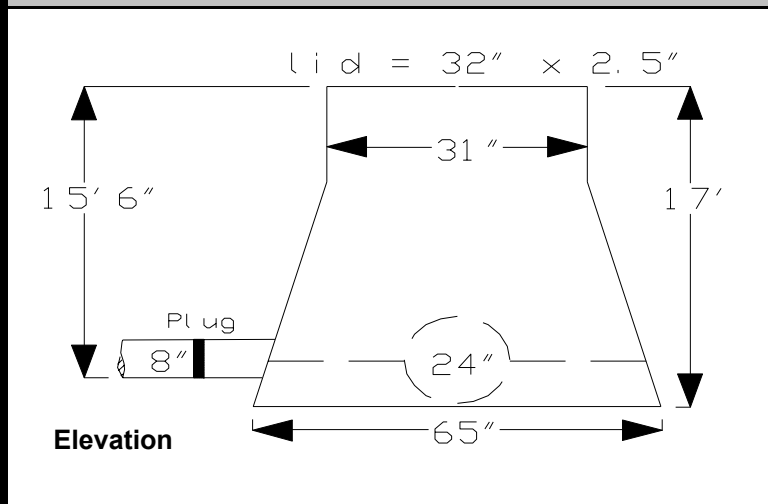
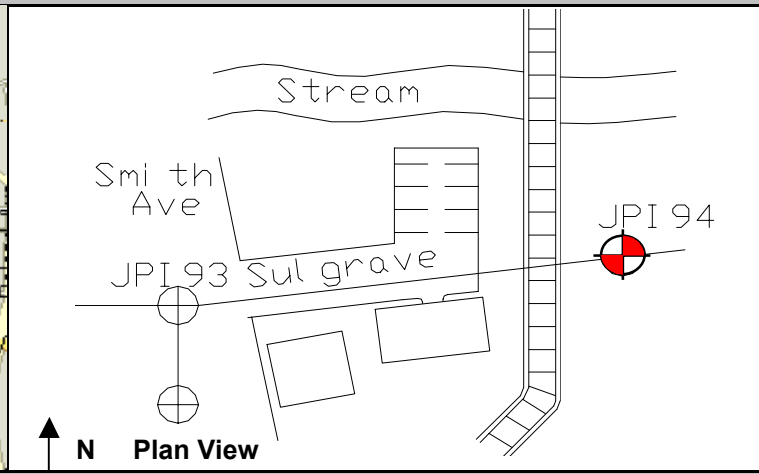
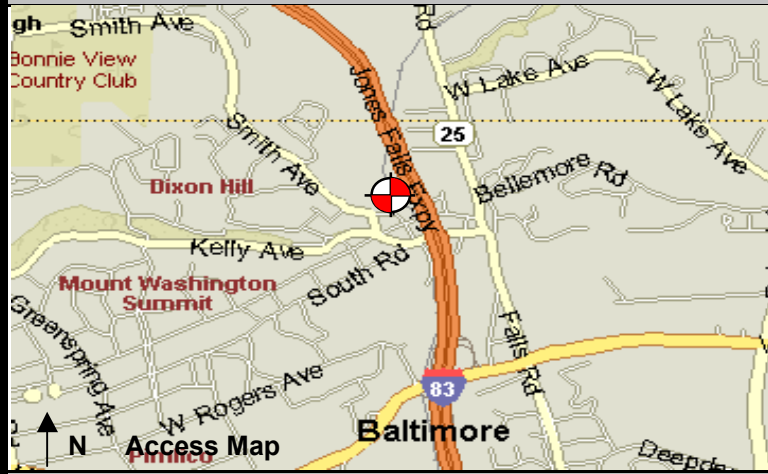
Baltimore SSO

Site Investigation Report

FM Initials: DF

Project Number: 02 Upper Jones Falls

Site Name:	02_JPI94I	Monitor Series:	4000	Monitor S/N:	1246	Manhole #:	JPI94I		Investigation Information: Upstream Input: (L/S, P/S) N/A Upstream Manhole: JP93 Downstream Manhole: JP10 Depth of Flow: 9" Description of Site Hydraulics:
Address / Location:	At the end of Sulgrave Ave, across the light rail tracks before I83	Map Page #:	2	Map Grid #:	19 GG ₂				
		Pipe Height:	24"	Pipe Width:	24"				
		IP Address:	166.142.225.144						
Access:	Walk (Residential)	GPS Coords:	N DD.dddd		W DD.dddd				
			39 22.156		76 39.043				
Date/Time of Investigation:	3/31/2003 16:02								


Manhole Information:

Manhole Depth: 17'

Manhole Material / Condition:

Brick / Good

Active Drop Connections?

No

System Character:

Residential

X

Commercial

Industrial

Notes:

8" line is plugged.

Legend:
 Cast Iron Flap Valve

 Sensor Location

N.T.S.- Not to scale

City of Baltimore Wet Weather Compliance Program

Flow Monitoring for Paragraph 8 Projects

02_JPI94\Imp1\DFINAL (inches):Dep

02_JPI94\Imp1\VFINAL (feet/sec):Vel

02_JPI94\Imp1\QFINAL (MGD - Total MG):Flow

RG01_CAL\Imp1\RAIN (inches):Rain

End of Sulgrave Ave

Baltimore, MD

Pipe Height: 24.00

This monitor was removed on 3/30/04. It is replaced with the monitor at site 02_JPI93I.